



TAKACHIHO MACHINE RECONDITIONING BUSINESS

Takachiho System Engineering Co., Ltd.

INTRODUCTION

- * Now days Japanese industries in domestic is shrunken due to world globalization and changing the capital expenditure plan for industrial goods.
- * On the other hand, users in overseas countries is studying to purchase cheeper goods as made in China and Taiwan.
- * Local users in overseas countries have requested more high value function for machines due to reach a high quality level.
- * Japanese companies and local companies are thinking automation and cost cutting due to high labor cost.

AND THEN WE ...

- * Our company organized by ex-member from Aida Engineering for about forty years, we have been working with many experiences and records for sales and purchase of new and second hand machines, automation equipment and after service.
- * In general condition of second hand machine business, machines will be sold as it is. But our business policy for second hand machine is repairing, retrofitting and over haul since June 2013.
- * We would like to provide high performance machine for each customers, rather than ordinary second hand machine suppliers.

FOR EXAMPLE...

- * We can propose from both goods of new and second hand machine with considering production line.
- * Materialize most suitable systems even with second hand machine for coil line, automation and QDC system.
- * Export to overseas countries and installation and commissioning are available.
- * Available for any parts for maintenance and modification.
- * We can take out machines from customer's factory and repair it and return back retrofited machine to customer.
- * We can provide best works quickly up to 1000 ton class machines.

SERVICE MAINTENANCE FLOW

1. Evaluation second hand machine, purchase and keep in Yorii factory.
2. Cleaning
3. Check function and check list.
4. Order parts & repair.
5. Painting
6. Installation new safety sensor and anti vibroisolation mount
7. Delivery
8. Installation, commissioning (as customer's request)



CLUTCH & BRAKE MAINTENANCE

- * Dismantle and repair when C&B malfunction or disorder as abnormal sound, oil leaking and big gap.



SLIDE MAINTENANCE

- * Repair for abnormal sound, oil leaking and gib gap.



PNEUMATIC EQUIPMENT MAINTENANCE

- * Repair and replace hose for air leaking, aging and guage, meter, valve and balance cylinder.



ELECTRIC PARTS MAINTENANCE

- * Check relay, magnet switch, limit switch, operation switch and panel/box.
Recommend new parts replacement.



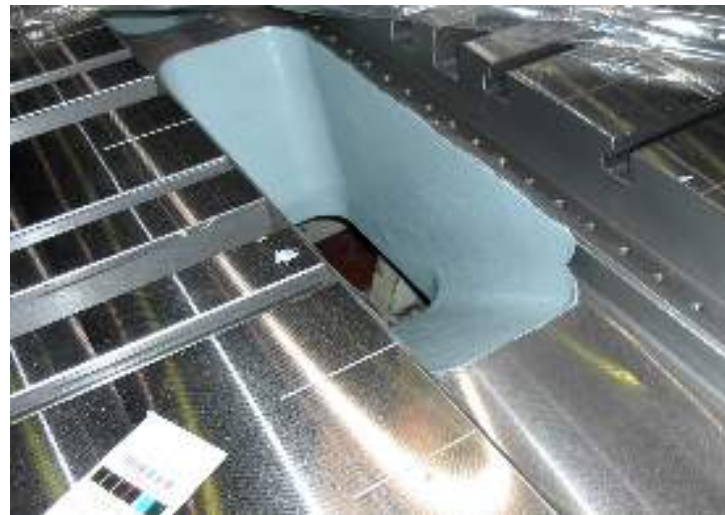
MOTOR MAINTENANCE

- * Check insulation resistance and housing.
- * Disassemble and repair.



BOLSTER REGRINDING

- * Machining for top / bottom surface to eliminate dents, scratches and holes.



UNDER COATING • PAINTING

* Repaint under Manufacturer's standard colors.



YORII FACTORY FACILITY



<30t/5t Over Head Traveling Crane> × 1

Winches: Hitachi

Maker : Nippon Crane

Lifting Height : 11.1M(Main) 11.9M(Sub)

<2.8t Over Head Traveling Crane> × 1

Winche: Mitsubishi

Maker : Nippon Crane

Lifting Height : 9.2M

<Engine Generator> × 1

150KVA, 200V/400V

Maker : Hokuetsu

<1.0t Picker Ace> × 1

Lifting Height : 5M

Maker : Nichiyu

<3.5t Engine Forklift> × 1

Maker : Mitsubishi

<Load Meter> × 1

Max 30ton

<Compressors>

for test run

YORII FACTORY LOCATION & SPACE

Address:

Takasu 575-1, Yorii-Machi, Osato, Saitama,
369-1213, Japan

TEL:048-598-8422

FAX:048-598-8423

Land Space:3000 m²

Factory Space:814.5 m²(45m × 18m)

Factory Height:15.15m

Main Shatter:6m × 4.5m

Sub Shatter:4.5m × 4.5m

Maintenance Pit:L12m × W5m × D2m

